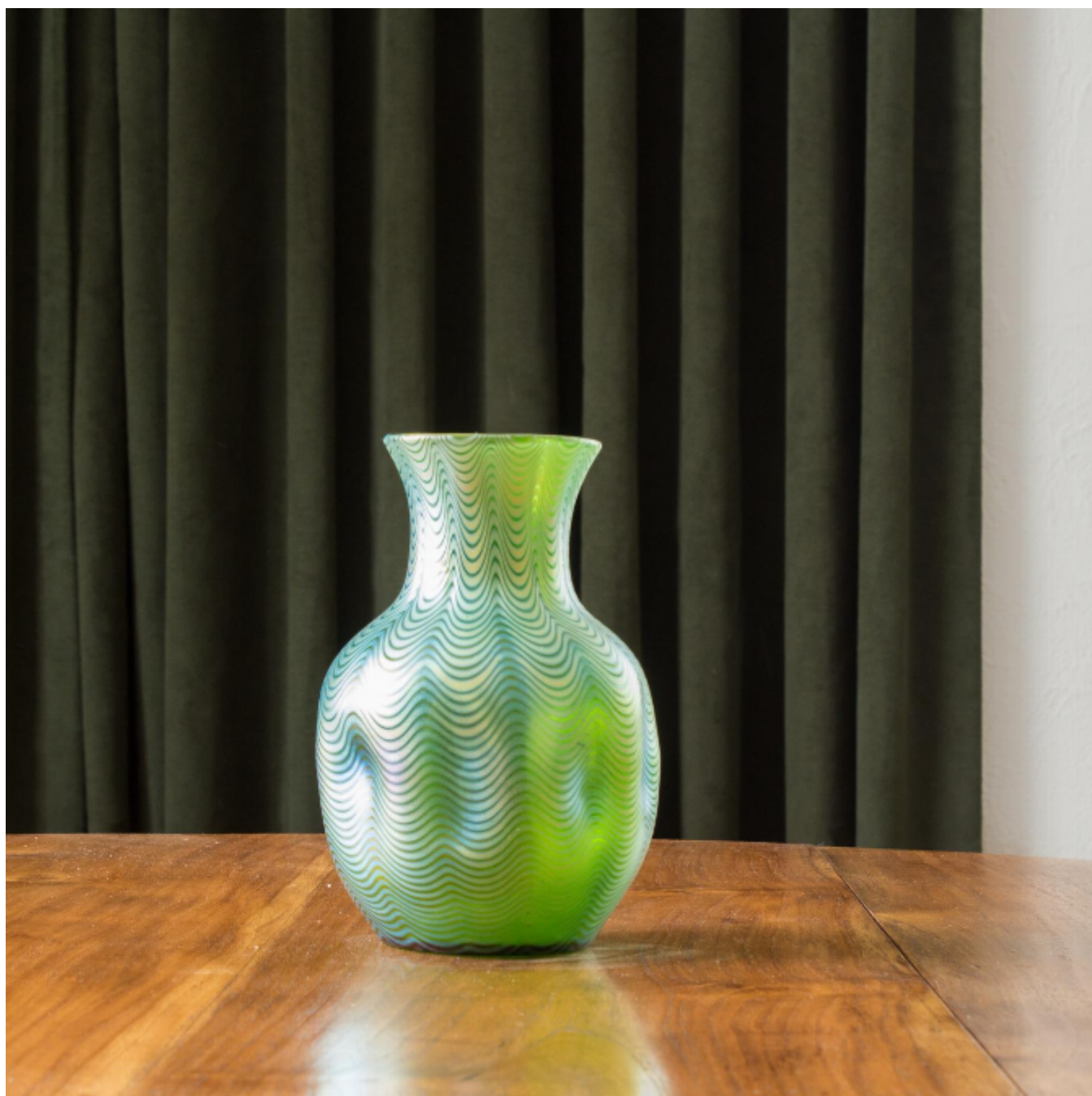


A Creta Phanomen iridescent glass vase by Loetz (Johann Loetz Witwe)

£1,250



REF: 4820

Height: 20 cm (7.9")

Diameter: 13.5 cm (5.3")

Description

Of bulbous form, with a pulled trail design and impressed details.

The Phanomen series of designs marked the zenith of Loetz Art Nouveau glass, winning the Grand Prix in the Paris World's Exposition in 1900. This example is most likely pattern PG 6893.

Bohemia, c1898